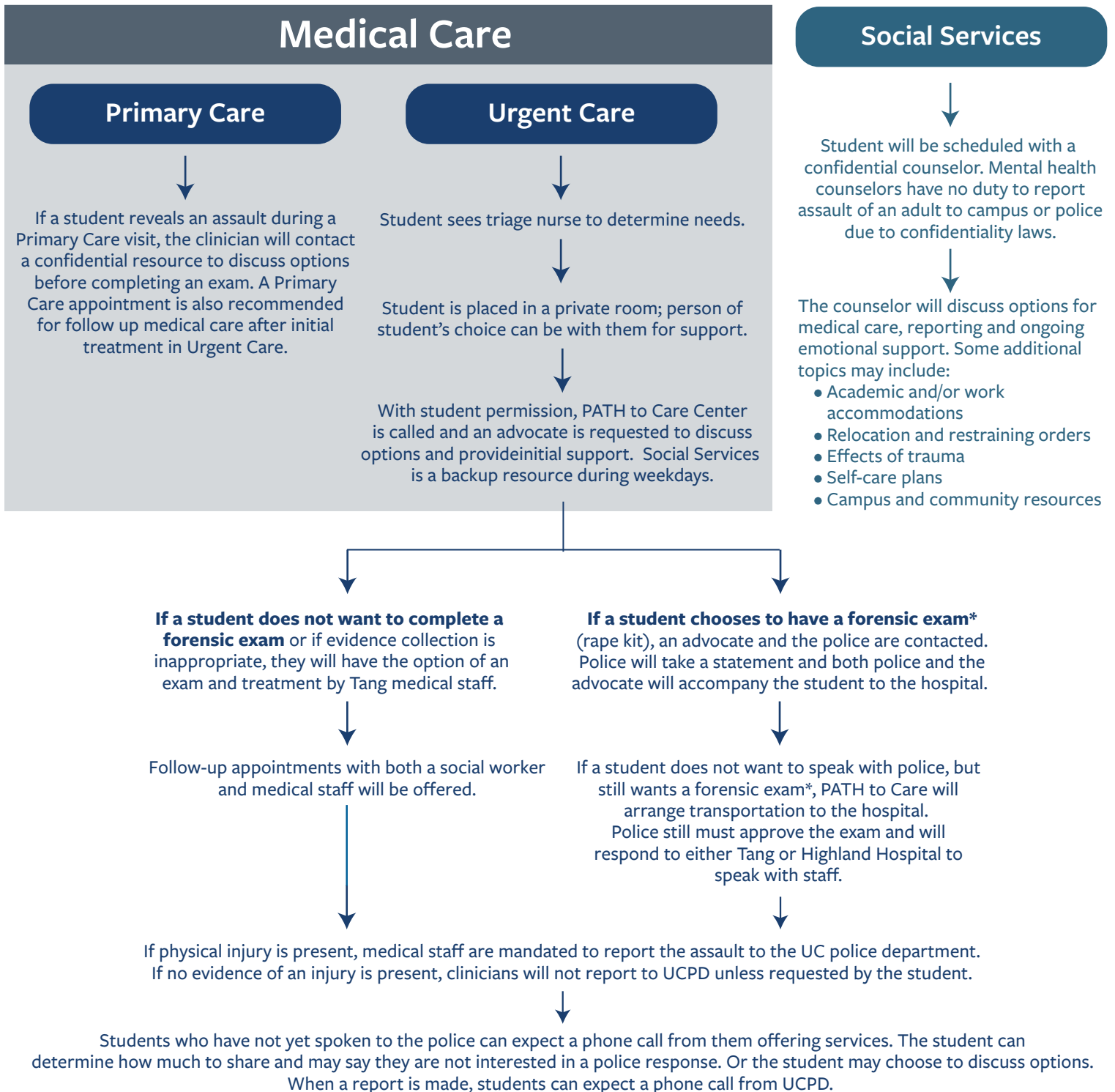


Care at the Tang Center for Sexual Assault Survivors



Additional Information and Resources

*Authorized forensic exams are billed to the State, not the student.

Fees are waived for care at the Tang Center following sexual or partner violence.

PATH to Care: (510) 642-1988 for appointments and consultations; (510) 643-2005 for 24/7 urgent support.

UC Berkeley's Survivor Support website: survivorsupport.berkeley.edu Bay Area Women Against Rape: bawar.org